

34127 / TFW200-2F

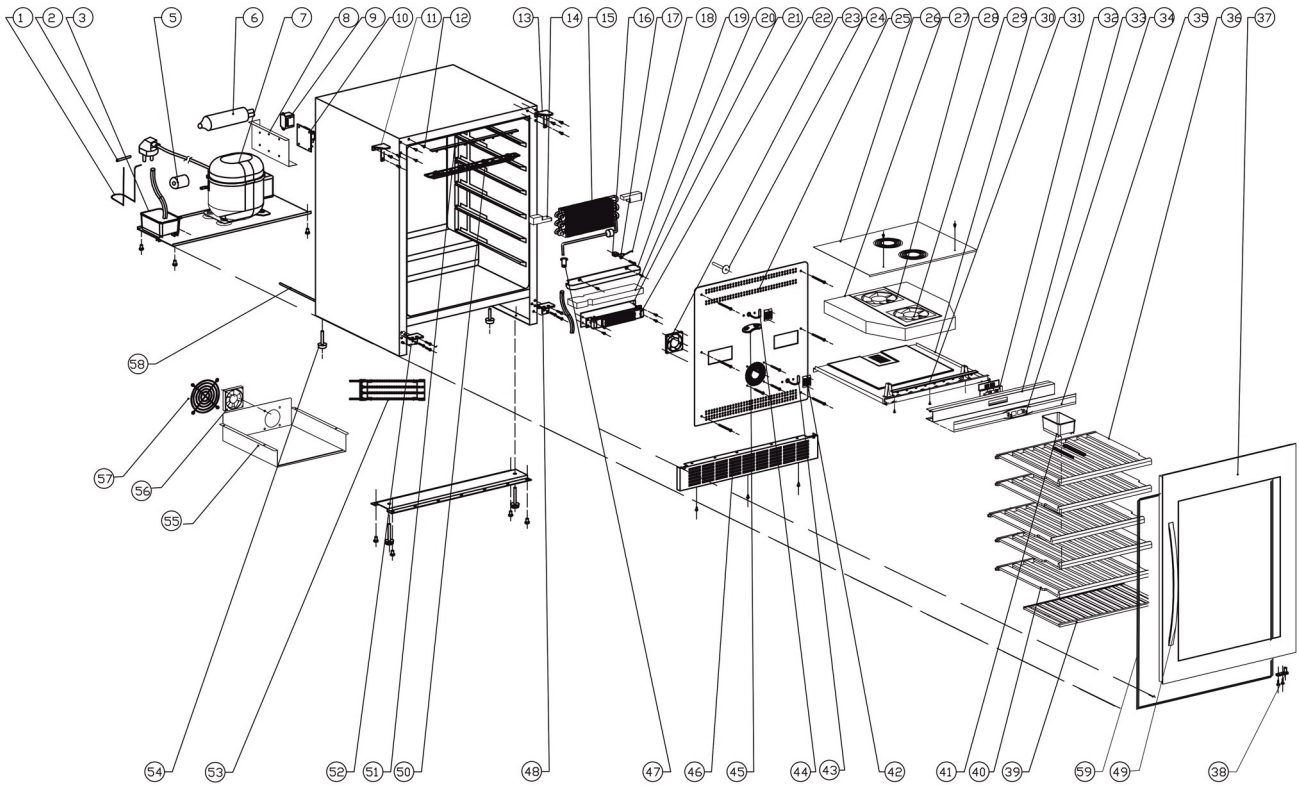
| Position | ItemNo | Description |
|----------|--------|--|
| 01 | 14224 | Evaporating Tube |
| 02 | 34773 | Wire Clamp |
| 03 | 11487 | Drip Tray |
| 06 | 12558 | Anti-Vibration Gasket |
| 07 | 15703 | Filter Drier |
| 08 | 34796 | Belt |
| 09 | 34797 | Compressor MG1080Y |
| 11 | 13638 | Electrical Box |
| 12 | 41621 | Thermostat PCB Power Board from 2021 |
| 14 | 34795 | Decorative nail |
| 15 | 34799 | Top right hinge |
| 16 | 33620 | Evaporator Foam |
| 17 | 14250 | Evaporator |
| 18 | 15155 | Stopper For Presentation Shelf |
| 19 | 13725 | Wire Clamp |
| 20 | 13800 | Cabinet Sensor |
| 21 | 11486 | Drip Tray |
| 23 | 13288 | PTC Heater |
| 25 | 13575 | Heater Fan |
| 26 | 34809 | Air duct board A |
| 27 | 13505 | Fan Cover |
| 29 | 13436 | Evaporator Fan Dc1225S |
| 30 | 13436 | Evaporator Fan Dc1225S |
| 31 | 11176 | Middle Bridge |
| 32 | 34810 | LED light |
| 33 | 13860 | Display Holder |
| 33.1 | 41623 | Thermostat PCB White Display Board from 2021 |
| 34 | 13861 | Display Support |
| 35 | 34786 | Button |
| 36 | 10960 | Display Panel |
| 37 | 34801 | Wood shelf |
| 38 | 34802 | Door |
| 38.1 | 34803 | Door Gasket |
| 38.2 | 31369 | Handle 2020 |
| 39 | 34785 | Door hinge axis |
| 40 | 15254 | Wooden Shelf G (Bottom) |
| 41 | 34801 | Wood shelf |
| 42 | 34783 | Humid box |
| 43 | 34812 | Heat partition gasket |
| 44 | 13848 | Cover For Sensor |
| 45 | 14456 | Evaporator Sensor |
| 46 | 34813 | Sensor |
| 47 | 34788 | Filter box |
| 47.1 | 34789 | Filter |
| 48 | 32349 | Bottom Grill For Lock |
| 49 | 10681 | Keys |
| 50 | 34807 | Air circulation gasket |
| 52 | 34804 | Lower hinge right |
| 53 | 34805 | Front leg bracket |
| 54 | 15601 | LED Light Cover |
| 55 | 34814 | LED light board |
| 56 | 34806 | Lower hinge left |
| 57 | 14112 | Condenser |
| 58 | 14554 | Adjustable Feet |
| 59 | 14177 | Condenser Cover |
| 60 | 13363 | Condenser Fan Dc1225B |
| 61 | 13504 | Fan Cover |
| 62 | 15740 | Air Valve |
| 99 | 12972 | Top Hinge Left |
| 99.1 | 31371 | Bottom Hinge Axis Left |
| 99.2 | 31372 | Key |

34127 / TFW200-2F

| | | |
|------|-------|-----------------|
| 99.3 | 34778 | Decorative nail |
|------|-------|-----------------|

2023-01-16

34127 / TFW200-2F



| | |
|------------------|--------------|
| TEFCOLD | Date: 201208 |
| Model: TFW160-2F | Rev. no.: 02 |
| Exploded view | Rev. by: rfj |
| Drawing no.: | |